

1991 Florida High School Academic Tournament

Introduce yourself.

Welcome participants, give round number and the significance of this particular competition. (The two teams with the highest scores will compete in the semifinals on Monday at 10:30 a.m. The remaining teams will compete Sunday at 2:30 p.m.)

Have judges, scorekeepers and student helpers introduce themselves. (Judges should give their name and the areas in which they will be judging only.)

Have the team coaches come forward to introduce himself/herself and team members.

Conduct a button check.

Begin 5-point question round.

HUM 1. Name the Medieval philosopher who attempted to reconcile faith and reason in his Summa Theologica.

Answer: Thomas Aquinas (accept: St. Thomas Aquinas)

(Source: The Humanities, Vol. 1, Mary Ann Frese Wittstall, D.C. Heath, p. 159)

ENG 2. Match each of the four idioms to its translation.

Idioms

1. according to Hoyle
2. bone to pick
3. curry favor
4. de rigueur

Translations

- A. necessary according to convention
- B. strictly adhering to a set of rules
- C. trying to ingratiate oneself by fawning over someone
- D. having a grievance that needs to be talked out

Answer: 1-B, 2-D, 3-C, 4-A

SCI 3. Which one of the following three life zones refers to the open ocean?

- A. littoral zone
- *B. pelagic zone
- C. benthic zone

(Source: Marine Biology, Lerman)

SS 4. Fill in the blank: According to Freud, the part of the psyche which stops a person from stealing is the _____.

Answer: superego

(Source: Understanding Psychology)

- MATH 5.** Using the digits 1, 2, 3, 4, and 5, how many five-digit positive integers greater than 30,000 can be formed if no digits can be repeated?

Answer: 72 ($3 \times 4 \times 3 \times 2 \times 1$) 3-4!

- SCI 6.** Match each of the four natural products to its synthetic replacement.

<u>Natural Products</u>	<u>Replacements</u>
1. cotton, silk, wool	A. synthetic toppings
2. whipped cream	B. pesticides
3. natural predators	C. plastics
4. wood	D. nylon, polyester, acrylic

Answer: 1-D, 2-A, 3-B, 4-C

(Source: Environmental Science, Addison Wesley, p. 19)

- ENG 7.** Name the sonnet in which Shelley satirizes a vain monarch who says, "Look on my works, ye mighty, and despair."

Answer: "Ozymandias"

(Source: Literature of Human Experience, p. 1024)

- MUS 8.** Complete the following statement using one of the following four given choices. Ignace Jan Paderewski (Ig-natz Yon Pad-eh-rev-ski), the famous Polish pianist, was also a _____.

- A. physician
- *B. Prime Minister
- C. psychologist
- D. priest

- SS 9.** Match each of the four temperature zones to the appropriate description.

<u>Temperature Zones</u>	<u>Descriptions</u>
1. Southern Temperate	A. The equator goes through this zone.
2. Northern Temperate	B. The North Pole can be found in this zone.
3. Torrid	C. The southern parts of South America and Africa are here.
4. Northern Frigid	D. The southern border of the Arctic Circle is the northern border for this zone.

Answer: 1-C, 2-D, 3-A, 4-B

MATH 10. Which one or ones of the following three functions do not have a vertical asymptote at $x = -2$?

*A. $y = \frac{x^2 - 4}{x + 2}$

B. $y = \frac{x^2 - 9}{x + 2}$

*C. $y = \frac{x^2 + 2x}{x + 2}$

ART 11. Name the Dutch artist from Delft who often placed his figures near a window to incorporate light into his works.

Answer: (Jan) Vermeer

(Source: The Humanities - Vol. 2, D.C. Heath)

MATH 12. What is the slope of the tangent line at $x = -3$ if f of x equals the quantity x squared minus nine divided by the quantity x minus three?

Answer: 1

ENG 13. Name the Shakespearean play and the character who gives the following advice to his son:

"Neither a borrower nor a lender be;
For loan oft loses both itself and friend."

Answer: Hamlet, Polonius

SS 14. Which one of the following four states was the largest in terms of population when the first census was taken?

- A. Massachusetts
- B. New York
- C. Pennsylvania
- *D. Virginia

(Source: Encyclopedia of American History, Morris, p. 648)

MATH 15. Match each of the four mathematicians to his contribution.

<u>Mathematicians</u>	<u>Contributions</u>
1. Napier	A. equations
2. Babbage	B. sequences
3. Diophantus	C. logarithms
4. Fibonacci	D. computers

Answer: 1-C, 2-D, 3-A, 4-B

ART 16. Name the painting medium in which pigments are suspended in hot beeswax.

Answer: encaustic

(Source: Artforms/Preble, pg. 137, Harper & Row)

SCI 17. Arrange the following four items in order of increasing pH.

- A. household ammonia
- B. pure water
- C. vinegar
- D. milk

Answer: C, D, B, A

(Source: Zumdahl's Introductory Chemistry, p. 572)

ENG 18. Which one of the following four plays was not written by Tennessee Williams?

- A. The Rose Tattoo
- B. The Night of the Iguana
- C. A Streetcar Named Desire
- *D. The Matchmaker

SCI 19. If the gravitational field strength near earth's surface is 9.8 newtons per kilogram, what will be the vector acceleration in meters per second squared of a projectile at the highest point in its path?

Answer: 9.8 (downward)

(Source: Sears et al, College Physics, p. 86, 6th Ed.)

SS 20. Match each of the four inventors to the slogan associated with his invention.

- | <u>Inventors</u> | <u>Associated Slogans</u> |
|--------------------------|---|
| 1. Joseph Lister | A. "We bring good things to light." |
| 2. Alexander Graham Bell | B. "Kills germs by millions on contact" |
| 3. Thomas Edison | C. "Reach out and touch someone." |
| 4. Henry Ford | D. "Quality is Job 1." |

Answer: 1-B, 2-C, 3-A, 4-D

End of 5-point round.

Begin 10-point team question.

Read: For this team question you will be given Handout 1-1.

Do not distribute the handouts until you are instructed to do so. This team question is worth 10 points. Each blank is worth 1 point.

You will be given 2 minutes. Please identify one handout as your team answer sheet in the upper left-hand corner.

Begin.

Time 2 minutes.

Handout 1-1

Team # _____

The following scientists have fundamental units of physics named after them. Match each scientist to his nationality and what the unit named for him measures.

<u>Scientist</u>	<u>Nationality</u>	<u>Unit Measure</u>
1. Hertz	_____	_____
2. Tesla	_____	_____
3. Coulomb	_____	_____
4. Newton	_____	_____
5. Celsius	_____	_____

Nationality

- A. English
- B. Yugoslav
- C. French
- D. Swedish
- E. German

Unit Measure

- V. quantity of electricity
- W. frequency
- X. temperature
- Y. magnetic flux density
- Z. force

STOP!

Identify one handout as your team answer sheet and hold it in the air. The judges will correct your work.

Read answers: (one point each) (Source: Sears College Physics and Chamber's Biographical Dictionary)

1. E, W
2. B, Y
3. C, V
4. A, Z
5. D, X

Announce scores from team question.

Two-minute break. (All coaches should report to scorekeepers whether substitutions are made or not.)

Announce scores after the round.

Begin 10-point question round.

SS 21. Name the lawyer who defended the British soldiers accused of murder in the Boston Massacre.

Answer: John Adams (note: do not accept John Quincy Adams)

(Source: A History of the United States, Boorstin)

ENG 22. Identify any three of the four authors of the following Pulitzer Prize-winning books of fiction.

1. Rabbit at Rest
2. The Yearling
3. Lonesome Dove
4. The Bridge of San Luis Rey

(any three)

Answer: 1. (John) Updike, 2. (Marjorie Kinnan) Rawlings,
3. (Larry) McMurtry, 4. (Thornton) Wilder

MATH 23. Find the sum of the first 20 terms of the sequence 5, 8, 11, 14...

Answer: 670

ENG 24. Match each of the four sea captains of literature to the author who created each.

Sea Captains

1. Ahab
2. Long John Silver
3. Hook
4. Nemo

Authors

- A. Jules Verne
- B. Robert Louis Stevenson
- C. Herman Melville
- D. James Barrie

Answer: 1-C, 2-B, 3-D, 4-A

For the next question you will be given Handout 1-2. Do not distribute until you are instructed to do so.

ENG 25. Which one of the following four structures is the form of lines 2-8?

- A. compound sentence
- B. adjective clause
- C. prepositional phrase sequence
- *D. compound-complex sentence

(Source: Literature, Robert DiYanni, p. 508)

SCI 26. Name four of the six different crystal forms.

(any four)

Answer: cubic, hexagonal, orthorhombic, monoclinic, tetragonal, triclinic

(Source: Prentice Hall, Earth Science, 3rd Ed., p. 140)

MATH 27. Find the value of x in the equation the logarithm base x of one-twenty-fifth equals negative two-thirds.

Answer: 125

SS 28. Choose three of the following four political movements and give the color associated with it.

- A. Protestant political movement in Northern Ireland
- B. Garibaldi's soldiers
- C. Serbian Union or Death
- D. SS Storm Troopers

(any three)

Answer: A. orange, B. red, C. black, D. brown

FL 29. Three-way matching. Match each of the four pilgrimage shrines to the person and to the object with which the site is most closely associated.

<u>Shrines</u>	<u>Persons</u>	<u>Objects</u>
1. Santiago de Compostela	A. St. Thomas à Becket	W. veil
2. Sainte-Chapelle	B. Mary	X. grave
3. Canterbury	C. St. James	Y. crown of thorns
4. Chartres	D. St. Louis	Z. bones

Answer: 1-C-Z, 2-D-Y, 3-A-X, 4-B-W

SCI 30. If in mammals the role of oxygen transport agent in the blood is filled by iron, then name the element which has this role in the blood of mollusks and crustaceans.

Answer: copper

(Source: Chemistry by Heath)

Handout 1-2

The Sick Rose

O Rose, thou art sick!	1
The invisible worm	2
That flies in the night,	3
In the howling storm,	4
Has found out thy bed	5
Of crimson joy,	6
And his dark secret love	7
Does thy life destroy.	8

- ENG 31. Match each of the four horsemen of the Apocalypse to the appropriate horse.

<u>Horsemen</u>	<u>Horses</u>
1. Conquest	A. black
2. Slaughter	B. white
3. Famine	C. red
4. Death	D. pale

Answer: 1-B, 2-C, 3-A, 4-D

(Source: Benét's Readers Encyclopedia, p. 345, Revelation 6)

- SS 32. St. Louis, Missouri, and the Galapagos Islands in the Pacific Ocean lie along nearly the same degree of longitude. True or false?

Answer: true

- MATH 33. If the function f of x equals x squared minus 1, and the function g of x equals x minus 1, then what are the zeros of the composite function f of g of x ?

Answer: 0, 2 (either order)

For the next question you will use Handout 1-3. Do not distribute these until you are instructed to do so. (pause) You may distribute these face up.

- MUS 34. This is a two-part question. Part 1: Identify the tune (or melody) found on the handout. Part 2: If you were to transpose to the key of E-flat, how many flats would appear in the new key signature?

Answer: Part 1: Twinkle, Twinkle, Little Star, Part 2: 3

- SS 35. Match each of the four people to his Watergate connection.

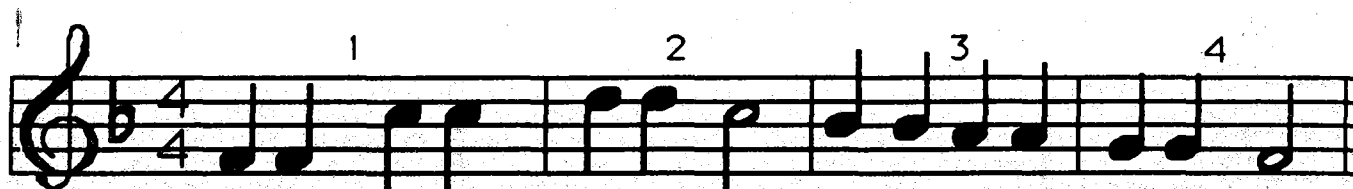
<u>People</u>	<u>Connections</u>
1. Leon Jaworski	A. Justice Department's Special Prosecutor
2. John Sirica	B. Security Chief for the Committee for the Re-election of the President
3. Carl Bernstein	C. reporter for the <u>Washington Post</u>
4. James McCord	D. judge in charge of the trial of the five Watergate burglars

Answer: 1-A, 2-D, 3-C, 4-B (Source: Current, pp. 945, 947)

- SCI 36. Give the efficiency of a Carnot engine if it is operating in an environment of 0 kelvin.

Answer: 100%

Handout 1-3



MATH 37. This is a two-part question. Part 1: What is the area in square units of a regular quadrilateral inscribed in a circle whose diameter is twelve units? Part 2: What is the area in square units of the regular quadrilateral circumscribed about the same circle?

Answer: Part 1: 72, Part 2: 144

ART 38. Match each of the four art terms to its description.

<u>Art Terms</u>	<u>Descriptions</u>
1. monochromatic	A. two hues directly opposite one another on the color wheel
2. analogous	B. the use of many hues and their variations
3. complementary	C. variations in value and intensity of a single hue
4. polychromatic	D. hues adjacent to one another on the color wheel

Answer: 1-C, 2-D, 3-A, 4-B

(Source: Artforms/Preble, pg. 90-91, Harper & Row)

For this question you will use Handout 1-4. Do not distribute these until you are instructed to do so. (pause) Distribute these face down. (pause) You may distribute these face up. (Allow time for students to read.)

FL 39. This is a three-part question. Part 1: Where are the two people going? Part 2: Specifically, what is each person wearing? Part 3: What are the two people going to do?

Answer: Part 1: to church
Part 2: She: white dress and veil. He: black jacket and gray slacks and gray shoes
Part 3: get married

SCI 40. If the speed of light in air is 3.0×10^8 meters per second but only 2.0×10^8 meters per second in plastic, what is the index of refraction of plastic?

Answer: 1.5 (Source: Physics: Principles and Problems, p. 308)

End of 10-point round.

Handout 1-4

French: C'est l'instant où le coeur bat plus fort. Dans quelques minutes il faudra prendre le chemin de l'église et prononcer le "oui" fatidique.

Pour elle une belle robe blanche et un voile, aussi blanc, et le traditionnel bouquet.

Lui, il a préféré une veste noire de Chez Dior sur un pantalon gris et des chaussures grises.

Il ne sera plus longtemps qu'ils auront les bagues en or aux doigts!

Spanish: Éste es el momento cuando late fuertemente el corazón. En algunos minutos tomarán el sendero de la iglesia, donde pronunciarán el "sí" fatídico.

Para ella un bello vestido blanco acompañado de un velo blanco y el bouquet tradicional.

Él ha escogido una chaqueta negra de Dior y pantalones grises y zapatos grises.

!No falta mucho para que lleven los anillos de oro en los dedos!

German: Endlich ist es so weit. In ein paar Minuten werden sie mit klopfendem Herzen in die Kirche fahren.

Sie trägt ein elegantes, weisses Kleid und einen weissen Schleier.

Er ist in einer schwarzen Jacke, grauen Hosen und grauen Schuhen gekleidet.

Die Kirche ist schön geschmückt und viele Freunde sind schon da, denn die Beiden wollen heute heiraten.

Begin 20-point team question.

Read: For this team question you will be given Handout 1-5.

Do not distribute the handouts until you are instructed to do so. This team question is worth 20 points. Each blank is worth 4 points.

You will be given 3 minutes. Please identify one handout as your team answer sheet in the upper left-hand corner.

Begin.

Time 3 minutes.

STOP!

Identify one handout as your team answer sheet and hold it in the air. The judges will correct your work.

Read answers: (4 points each)

- Answers:
1. The Return of the Native Son
 2. Gone With the Wind in the Willows
 3. Main Streetcar Named Desire
 4. A Doll's House of the Seven Gables
 5. Because I Could Not Stop For Death of A Salesman

Announce scores from team question.

Two-minute break. (All coaches should report to scorekeepers whether substitutions are made or not.)

Announce scores after the round.

Begin 15-point question round.

- SS 41. Give the name of the 1935 New Deal act which gave labor the right to organize.

Answer: Wagner Act (accept: Wagner-Connery Act or National Labor Relations Act)

- SCI 42. Match each of the four particles to its appropriate interaction force.

<u>Particles</u>	<u>Forces</u>
1. photon	A. strong or color force
2. Z^0 boson	B. electromagnetic force
3. graviton	C. weak force
4. gluon	D. gravitational force

Answer: 1-B, 2-C, 3-D, 4-A

(Source: College Physics, Sears, p. 920)

Handout 1-5

Team # _____

Combine literary works by the following unlikely teams of writers by finding the common word that ends one title and begins the other. (Ignore A and The in combining titles.) e.g. Joseph Conrad and Arthur Koestler--Heart of Darkness at Noon

1. Thomas Hardy and Richard Wright
2. Margaret Mitchell and Kenneth Grahame
3. Sinclair Lewis and Tennessee Williams
4. Henrik Ibsen and Nathaniel Hawthorne
5. Emily Dickinson and Arthur Miller

1. _____
2. _____
3. _____
4. _____
5. _____

MS 43. Answer three of the following four questions concerning the year 1886.

1. Name the evening riot associated with a strike at the McCormick Harvesting Machine Company in Chicago.
2. Name the novel by Frances Hodgson Burnett whose seven-year-old hero started a fashion trend of velvet suits for children.
3. Name the art technique developed by impressionist Georges Seurat demonstrated in Sunday Afternoon on the Island of La Grande Jatte.
4. Name the Marine Band conductor, famous for his marches, who played the wedding march for Grover Cleveland and his bride.

(any three)

- Answer:
1. Haymarket Riot (accept: massacre or affair for riot)
 2. Little Lord Fauntleroy
 3. pointillism
 4. (John Philip) Sousa

MUS 44. Arrange the following four compositions in chronological order.

- A. "Air for the G String" by J.S. Bach
- B. Ninth Symphony by Beethoven
- C. The Magic Flute by Mozart
- D. Liebestraum by Franz Liszt

Answer: A, C, B, D

MATH 45. Find the slopes of the two asymptotes of the hyperbola $9x^2 - y^2 = 18$.

Answer: 3, -3 (either order)

ENG 46. Choose three of the following four first lines and identify the British poet who wrote each.

1. "The sea is calm tonight."
2. "Much have I traveled in the realms of gold,"
3. "Hail to thee, blithe spirit!"
4. "Do not go gentle into that good night."

(any three)

- Answer:
1. (Matthew) Arnold [from "Dover Beach"]
 2. (John) Keats [from "On First Looking Into Chapman's Homer"]
 3. (Percy) Shelley [from "To a Skylark"]
 4. (Dylan) Thomas [from "Do Not Go Gentle into that Good Night"]

(Source: Text: British Literature: A Chronological Approach, McGraw Hill)

- SCI 47.** This is a two-part question. An element has atomic number 6. Part 1: If the element decays by beta emission, what is the atomic number of the daughter nuclide? Part 2: If the element decays by positron emission, what is the atomic number of the daughter nuclide?

Answer: Part 1. 7, Part 2 5

- MATH 48.** What is the maximum value of the function y equals negative 2 times x squared plus 3?

Answer: 3

- SS 49.** Which one of the following four groups did not support the new Republican Party in 1854?

- *A. supporters of popular sovereignty
- B. Free Soilers
- C. Whigs
- D. anti-slavery Democrats

(Source: The Encyclopedia of American History, p. 259)

- ENG 50.** This is a three-part question. Part 1: Name the speaker of the following lines. Part 2: Name the play from which they come. Part 3: Name the author of the work.

"He's not the finest character that ever lived.
But he's a human being, and a terrible thing
is happening to him, so attention must be paid."

Answer: 1. Linda Loman (accept: Willy Loman's wife)
2. Death of a Salesman,
3. Arthur Miller

- HUM 51.** Which five of the following ten names are tribes of Israel?

- | | |
|---------------|---------------|
| A. Abraham | F. Jesse |
| ° B. Asher | ° G. Levi |
| ° C. Benjamin | ° H. Naphtali |
| ° D. Dan | I. Saul |
| E. David | J. Solomon |

Answer: B, C, D, G, H

For this question you will receive an art handout (art handout 1-6). There will be one two-part question concerning this handout.

- ART 52.** This is a two-part question. Part 1. Name respectively the adult and the infant in the artwork. Part 2. Name the sculptor.

Answer: Part 1. Hermes (the adult male) and Dionysus (the baby)
Part 2. Praxiteles

MS 53. Which one or ones of the following four topics could have been discussed on Ulysses S. Grant's second inauguration day?

- *A. Thomas Malthus' Essay on the Principles of Population
- B. Queen Victoria's Diamond Jubilee
- *C. Beethoven's Symphony No. 5
- *D. Charles Darwin's On the Origin of Species by Natural Selection

(Note: inauguration in 1873; A. 1798, B. 1897, C. 1808, D. 1859)
(Source: Timetables of History, pp. 426, 451, p. 379, 422)

SCI 54. Match each of the four hydrogen acceptors to the biological situation or reaction with which it is associated.

<u>Hydrogen Acceptors</u>	<u>Situations or Reactions</u>
1. FAD	A. end of electron transport chain in cellular respiration
2. oxygen	B. Krebs cycle or citric acid cycle
3. HCO_3^-	C. photosynthesis
4. NADP^+	D. blood buffer

Answer: 1-B, 2-A, 3-D, 4-C
(Source: Biology: Campbell, pp. 189, 191, 845, 209)

MATH 55. This is a three-part question. Solve each equation for x:

- A. $2^x = 16$
(two to the x power equals 16)
- B. $\ln e = x$
(the natural logarithm of e equals x)
- C. $x = \log_3 27$
(x equals the logarithm base 3 of 27)

Answer: A. $x = 4$, B. $x = 1$, C. $x = 3$

MS 56. Match each of the four containers to its contents.

<u>Containers</u>	<u>Contents</u>
1. Bernoulli box	A. tablets of the Ten Commandments
2. Ark of the Covenant	B. relic of the Buddha
3. Pandora's box	C. disk backup
4. Stupa	D. evils of the world

Answer: 1-C, 2-A, 3-D, 4-B

ENG 57. Fill in the two blanks with the missing titles. The story of Daedalus and Icarus appears in _____ by Joyce and _____ by Ovid.

Answer: A Portrait of the Artist as a Young Man - Joyce
Metamorphoses - Ovid

ECON 58. This is a four-part question. For each of the following four transactions, determine whether the transaction is included in or excluded from the computation of the GNP.

- A. purchase of a used 1985 Volkswagen
- B. purchase of 5 shares of IBM stock
- C. receipt of a social security check
- D. purchase of an airline ticket on Air France

Answer: A. excluded, B. excluded, C. excluded, D. included (as a negative #)

For the next question you will use Handout 1-7. Do not distribute these until you are instructed to do so. (pause) Distribute these face down.

COMP 59. Describe the exact output of the program on the handout. Turn them over and begin.

Answer: PURPLEBROWNGREENBLUE

MATH 60. This is a two-part question. Part 1: Given the equation $16x^4 - 49x^2 + 3 = 0$, how many distinct roots does the equation have? Part 2: What are the rational roots?

Answer: Part 1: 4, Part 2: $1/4$, $-1/4$

SCI 61. Name the scale which presently uses the formula the common logarithm of E equals $11.4 + 1.5M$, where E represents the number of ergs of energy and M relates to the magnitude, and the results include the side effects of p and s waves.

Answer: Richter scale

(Source: Earthquakes and Earth Structures--Hodgson, p. 101)

For this question you will listen to the recording of four musical selections (tape 1-7). There will be one four-part question concerning these selections.

ENG 62. In the order played, name each of the four original works upon which the Broadway musical was based.

- Answer:
1. Taming of the Shrew
 2. Romeo and Juliet
 3. Pygmalion
 4. Don Quixote

Handout 1-7

```
1 DATA "RED", "BLUE", "YELLOW", "GREEN", "BLACK", "BROWN", "ORANGE",  
  "PURPLE"  
2 FOR X = 1 TO 8  
3 READ X$  
4 P$(X) = X$  
5 NEXT X  
6 FOR X = 8 TO 1 STEP -2  
7 PRINT P$(X);  
8 NEXT X  
9 END
```

- SS 63. Match each of the following four Supreme Court Cases to its appropriate identification.

<u>Cases</u>	<u>Identifications</u>
1. <u>Marbury v. Madison</u>	A. involved a Justice of the Peace
2. <u>U.S. v. E.C. Knight</u>	B. A President said about it: "John Marshall has made his decision; now let him enforce it."
3. <u>Schechter v. U.S.</u>	C. set-back for early New Deal legislation
4. <u>Cherokee v. Georgia</u>	D. pointed out the ineffectiveness of the Sherman Anti-Trust Act

Answer: 1-A, 2-D, 3-C, 4-B

(Source: Encyclopedia of American History, Morris, p. 158, 312, 409, 204)

- FL 64. This is a three-part question involving Latin translations of movie titles. Part 1: What movie would have been "Gemini" in ancient Rome? Part 2: What movie would have been "Terra ante Tempus" in ancient Rome? Part 3: What movie would have been "Laborans Puella" in ancient Rome?

Answer: Part 1: Twins, Part 2: Land Before Time, Part 3: Working Girl

- MS 65. Identify three of the following four, each of which contains the same color.

1. a late nineteenth century detective agency well-known for its use by predatory capitalistic interests to crush trade-unionism
2. a disease related to influenza and scarlet fever which causes a coloration in the ocular area
3. a movie starring Molly Ringwald
4. singing group noted for the album The Wall

Answer: (any three) 1. Pinkerton, 2. pink-eye, 3. Pretty in Pink, 4. Pink Floyd

End of 15-point round.

Begin 30-point team question.

Read: For this team question you will be given Handouts 1-8 and 1-8A.

Do not distribute the handouts until you are instructed to do so. This team question is worth 30 points. Each blank is worth 2 points.

You will be given 4 minutes. Please identify one handout as your team answer sheet in the upper left-hand corner.

Begin.

Time 4 minutes.

STOP!

Identify one handout as your team answer sheet and hold it in the air. The judges will correct your work.

Read answers: (two points each)

1. cross to bear (accept similar response)
2. "Crossing the Bar"
3. People's (Party) (accept: Populist Party); Democratic (Party) either order on the listing of the parties is acceptable
4. Spanish: cruz
French: croix
German: Kreuz
5. Southern Cross
6. C
7. A
8. D
9. B
10. (George) Washington
11. Julius Caesar
12. A
13. E
14. C
15. D

Announce scores from team question.

Teams should remain seated until final scores are computed.

Announce scores.

If scores are tied, have a two-minute break before beginning the tie breaker question. Only the teams whose score is tied will compete.

Tie Breaker Questions.

C
R
O
S
S
S
S

Handout 1-8

Team # _____

1. What common English expression best parallels Coleridge's expression "an albatross around my neck" in Rime of the Ancient Mariner?

_____ is the poem by Tennyson which he instructed his publishers to insert at the end of each collection of his works.

3. Give the names of the two political parties who nominated as their presidential candidate in 1896 the man who gave the famous Cross of Gold Speech.

4. Choose to answer the question written in Spanish, French or German by supplying the missing word or words in the foreign language.

Un escritor místico español se llama San Juan de la _____.

Les catholiques, quand ils vont à la messe, font toujours le signe de la :
_____ quand ils y sont.

Hinter dem Altar war das berühmte, aus Holz geschnitzte _____,
welches uns an die Kreuzigung Jesus erinnerte.

5. What is the common name of the constellation Crux? _____

In Drosophila the trait of white eyes is sex-linked recessive. Match each of the probable parental crosses to the appropriate ratio of offspring.

<u>Parental Crosses</u>		<u>Offspring</u>	
_____ 6.	white eyed male with homozygous red eyed female	A.	all white eyed offspring
_____ 7.	white eyed male with white eyed female	B.	one-half red eyed females one-fourth red eyed males one-fourth white eyed males
_____ 8.	red eyed male with white eyed female	C.	all red eyed offspring
_____ 9.	red eyed male with heterozygous red eyed female	D.	one-half red eyed females one-half white eyed males

Identify the famous person who made each of the following crossings.

10. crossing of the Delaware River painted by Leutze _____

11. crossing of the Rubicon River resulted in his becoming dictator

Handout 1-8A

Team # _____

Match the names of the cross below to the pictures given.

____12. Greek cross ____13. Jerusalem ____14. Maltese cross

____15. Latin cross

