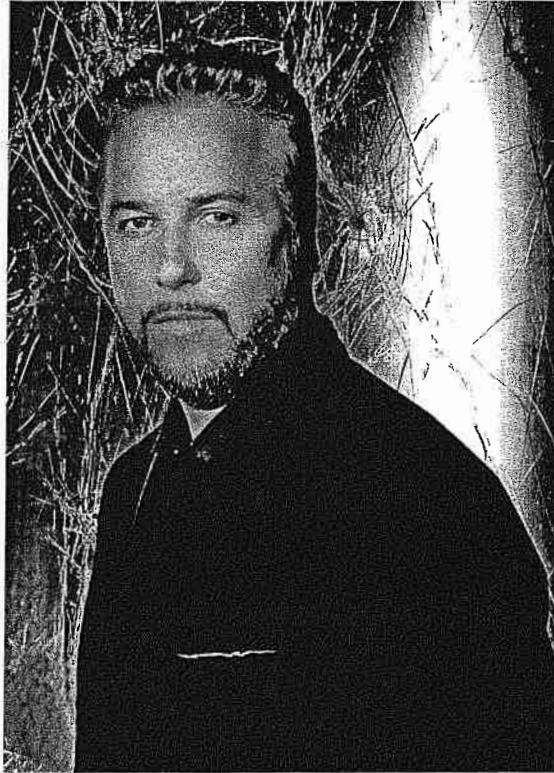


Cave Spring Invitational II

8



Gil Grissom

“There is always a clue.”

December 15, 2007
Roanoke, VA

Buzzer check question: What was your favorite question/answer at this tournament?

Round 1: Lightning Round – Each question is worth 10 pts. An incorrect answer, given before OR after the question is read in its entirety, is -5 pts and the question is dead so the other team does not have an opportunity to answer.

- ✓
1. For a circle, it is 0. For a parabola, it is 1. What term is used to describe how far off a conic section is from being circular?

answer: eccentricity

- 5
2. [NOTE TO MODERATOR: Play track #2, beginning at 1 minute, let the music play for a little bit before starting the question, then turn it down but have it playing in the background and begin reading the following question]

When asked by the wife of Johann Strauss II to autograph her fan, Johannes Brahms wrote the first few bars of this piece and the phrase “Unfortunately *not* by Johannes Brahms.”

answer: The Blue Danube Waltz

- ✓
3. The coldest known surface in the Solar System is here. Strangely, its orbit is opposite of its planet, Neptune. What is this largest moon of Neptune?

answer: Triton

- 5
4. Nicholas Trist bargained this \$15 million deal with Mexico to purchase part of the current states of Nevada, Colorado, Arizona, Wyoming, California, and Utah and end the Mexican-American War.

answer: Treaty of Guadeloupe-Hidalgo

- X
5. This Richmond, Virginia, native was the first American tennis player to earn over \$100,000 in one year. He was the first Black man to win Wimbledon and died from an HIV infection he received in a blood transfusion.

answer: Arthur Ashe

- ✓
6. The *Javanese Book of Kings* says an eruption occurred here in 416 AD. In August, 1883, what volcano in the Sunda Strait exploded with the largest sound recorded?

answer: Krakatoa

- ~~do NOT read - replacement question @ end of packet~~
7. This Italian wrote 39 operas including *William Tell*. Whose most famous opera was performed on February 20, 1816 at the Teatro Valle in Rome—the *Barber of Seville*?

~~answer: Gioachino Rossini~~

- ✓
8. This American playwright wrote one comedy amidst his tragic plays—*Ah, Wilderness!* Some of his other plays include *The Iceman Cometh*, *Mourning Becomes Electra*, and *A Long Day's Journey Into Night*.

answer: Eugene O'Neill

9. After Troy fell, this princess was given to Agamemnon and was later killed by Agamemnon's wife, Clytemnestra. Previously, she had an affair with Apollo who granted her the gift of prophecy but later cursed her so that no one would believe her.

answer: Cassandra

✓ 10. In this short story, the titular protagonist makes a deal with Old Scratch to obtain the riches of Captain Kidd in the nearby swamp.

answer: The Devil and Tom Walker

Round 2: Category Round – The team that is behind in points may choose their category first and the other team has their choice of the remaining categories. If both teams are tied, a coin will be flipped to decide who goes first. Conferring is allowed but each team must designate a captain. Each question is worth 10 pts. No penalties. Bounceback is in effect. If a team answers all ten of their questions correctly, an additional 50 pt bonus is awarded. The two categories for this match are: NORTH or SOUTH.

CATEGORY: NORTH

Answer these questions about the direction in which one finds both Santa Claus and Duluth, Minnesota.

- ✓ 1. This amazing light show is caused by an interaction of charged particles in the atmosphere and is named after the Roman goddess of dawn and the Greek god of the North Wind.

answer: Aurora Borealis or Northern lights

- ✓ 2. This Lieutenant Colonel served during the Vietnam War and was awarded the Silver Star, Bronze Star, and the Purple Heart. He worked under the Reagan administration, was involved in the Iran-Contra scandal, and lost a Senate race.

answer: Oliver North * Do NOT accept "North"

- ✓ 3. This actor born in Cedar Rapids, Iowa, played the role of the titular character in the film "North" when he was 13. While he is about 5 feet, 6 inches in real life, this man is best known for his role as a 3 foot furry-footed journeyer.

answer: Elijah Wood

- ✓ 4. What poet wrote the collection *North of Boston* that includes some of his more well-known works including "Mending Wall" and "After Apple Picking"?

answer: Robert Frost

- ✓ 5. What war was fought between Sweden and Russia from 1701 to 1721?

answer: Great Northern War (don't accept 'Northern' by itself)

- X 6. In 1960, this actor starred in the comedic Western *North to Alaska* as Sam McCord. In 1999, he was named the Greatest Male Star of All Time by the American Film Institute. He is best known to the public as "The Duke."

answer: John Wayne

- ✓ 7. Of course, our neighbor to the north is the good ole' maple leaf country of Canada. Now, being the good, world-literate (or at least North American-literate) students that we all are, we can name what national capital of Canada?

answer: Ottawa

8. During the 50s, the American "police action" in Korea drew a line between the North and South Koreans at what parallel?

answer: 38th Parallel

9. In this novel by Jane Austen, Catherine Morland is courted by John Thorpe and Henry Tilney who invites her to the titular estate. This book was the first written for publication by Austen, but was only circulated after her death.

answer: Northanger Abbey

10. In this movie, Roger Thornhill is mistaken as a government agent George Kaplan. It was written by Ernest Lehman to produce "the Hitchcock picture to end all Hitchcock pictures" and featured a famous Mount Rushmore chase scene.

answer: North by Northwest

CATEGORY: SOUTH

Answer these questions about the direction in which one finds both rheas and penguins.

1. A stewardess tagged passenger Kyla Ebbert for wearing too short a skirt on what airline's flight to Arizona?

answer: Southwest Airlines

2. The Republic of South Africa is one of a few nations that has more than one capital city. Bloemfontein holds the judicial branch, Cape Town the legislative branch, and what city is the executive capital of South Africa?

answer: Pretoria

3. Originally, this boundary was created between Maryland and Pennsylvania during a colonial era border dispute and was named after the surveyors. What line after the Missouri Compromise became the division between slave and free states?

answer: Mason-Dixon line

4. The southernmost continuously inhabited building in the world is named after what two men who participated in the "Race to the South Pole" and who were the first and second, respectively, to arrive there?

answer: Amundsen-Scott building

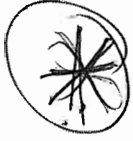
5. As a zodiac sign, its members are those with birthdays between February 19 and March 21. During the spring, what constellation can be seen in the southern sky that is named after the Latin word for fish?

answer: Pisces

6. This Civil Rights group began with the Montgomery Bus Boycott and was first led by pacifist Martin Luther King, Jr.

answer: SCLC or Southern Christian Leadership Conference

- ✓ 7. In the Southern division of the NFL, what team is coached by Bobby Petrino and plays in the Georgia Dome?
answer: Atlanta Falcons



- ✓ 8. This musical that shares a name with a region of an ocean is based on two short stories by James A. Michener. Its music was by Richard Rogers and the lyrics were by Oscar Hammerstein II.
answer: South Pacific

- ✓ 9. This show was created by Trey Parker and Matt Stone while they were still students at the University of Colorado. Some of the main characters are Kenny, Stan, and Kyle.
answer: South Park

- X 10. At this point in the year, the sun appears directly overhead at noon at the Tropic of Capricorn, and the southern tip of the earth is tilted to the greatest degree towards the sun.
answer: Winter solstice or December solstice

Round 3: Pyramid Round – There is no conferring. Ten tossup questions each worth 10 pts each. 30 pts available on each of the bonus questions. There are no bouncebacks on the bonus questions. An incorrect answer before the question is read is a -5 penalty. An incorrect answer after the question is read is no penalty.

✓ 1. It's possible that the man in the top hat with a gun is a self-portrait of the painter. The boy with two pistols was probably the inspiration for the character Gavroche from Les Miserables. Other social classes are represented in the crowd behind the foremost figure. It was intended to hang in the throne room of Louis Philippe as a reminder of how he came to power in the July Revolution. For ten points, what painting by Eugene Delacroix has a woman leading troops while carrying the French flag?

answer: Liberty Leading the People

✓ 2. New Mexico was admitted as a state. The Girl Scouts were founded. The Boston Red Sox beat the New York Giants in the World Series. The *RMS Titanic* hit an iceberg. The Olympics were held at Stockholm, Sweden. For ten points, these events occurred in what year in which Woodrow Wilson defeated Taft and Roosevelt for the Presidency?

answer: 1912

3. Chad, the older brother of this comic strip's main character, shows up for a week around Christmastime and disappears. In November of this year, a new girl named Viral appeared. The mother, Connie, is a child psychologist who is writing a book about cooperating with and raising teenagers. The father, Walt, is an orthodontist with a peace sign tattoo. 'Pierce' and Hector Garcia are the main character's two best friends and Sara Toomey is the girlfriend. Jeremy Duncan is the main character in, for ten points, what comic strip about a high school freshman?

answer: Zits

4. Madison Avenue to represent marketing. Washington instead of the United States Government. Broadway as the theater industry. Houston instead of NASA. Using the White House in the place of the President. For ten points, these are all common examples of what literary technique that replaces a word with something closely associated with it?

answer: Metonymy

✓ 5. This theory was proposed in 1912, but its first proposed cause, centrifugal force caused by the earth's rotation, was never taken seriously. Francis Bacon and Benjamin Franklin were among those who noticed that the east coast of South America and the west coast of Africa seemed to 'fit together.' Alfred Wegener was the first to suggest what theory that has since been supplemented by plate tectonics?

answer: continental drift (do not accept plate tectonics)

- X 6. Pencil and Paper ready. Roanoke County charges a luxury tax on certain items trucked across a certain bridge. The tax is 8 cents per pound and 90 cents per cubic foot. To calculate the total tax for a truckload containing 60 pounds of the items, which fill a 150-cubic-foot-bin, requires you to multiply each tax with its respective quantity and add those two figures together. For ten points, what is the total tax?

answer: \$139.80

- ✓ 7. In 1949, Linus Pauling and his team of researchers linked this disease to a mutation in a specific protein, the first time a genetic disease was connected to a defective protein. Complications from this disease can include jaundice, stroke, vaso-occlusive crisis, malfunctioning of the spleen, and blood vessels getting clogged. When the genetic mutation responsible for it was discovered, the US Air Force required all African Americans applicants to undergo genetic testing for mutated recessive allele. It's not all bad, though: those who have the gene are more resistant to malaria. For ten points, name this disease in which mutated hemoglobin causes the red blood cells to elongate.

answer: sickle-cell anemia or sickle-cell disease

- X 8. In 2007, Iceland surged past Norway to take the lead in this measure. Sierra Leone brought up the rear at 177th. Some countries and territories, like Afghanistan and Iraq, aren't ranked because they didn't provide the necessary data. Its formula was devised in 1990 by four economists led by India's Nobel laureate Amartya Sen and Pakistan's Mahbub ul-Haq, and it has worked better than mere per capita income measures. A number between 0 and 1 is, for 10 points, what UN-sponsored comparative measure of life expectancy, literacy, education, and gross domestic product?

answer: Human Development Index (Accept HDI)

- ✓ 9. The first page states its purpose: "To show the remnant of the House of Israel what great things the Lord has done for its fathers." The writer claimed that it was a translation from a form of Egyptian written on golden plates that had been buried near his home. For ten points, what religious text either written by or translated by Joseph Smith is used by the Church of Latter-Day Saints?

answer: Book of Mormon

- ✓ 10. According to painter Jack Heliker this man's final words were: "After 39 years, this is all I've done." This runs contrary to another, possibly apocryphal, version, which was: "18 straight whiskies. A new record!" He died in St. Vincent's Hospital in New York, exactly one month after this he delivered *Under Milk Wood* to the BBC. For 10 points, name this Welsh poet who wrote 'Fern Hill,' 'And death shall have no dominion' and, most famously, a villanelle about his dying father, 'Do not go gentle into that good night.'

answer: Dylan Thomas

BONUSES

1. For ten points each, answer these questions about the poetry of T.S. Eliot.
 - X a. This poem ends with the line “Shantih shantih shantih.”
 - i. Answer: The Waste Land
 - ✓ b. Among the queries of the titular character in this poem is “Do I dare to eat a peach?”
 - i. Answer: The Love Song of J. Alfred Prufrock
 - X c. Eliot opened this poem with the epigraph “Mistah Kurtz—he dead.”
 - i. Answer: The Hollow Men

2. For ten points each, answer the following about a show about ordinary people who “thought they were like everyone else... until they woke with incredible abilities.”
 - ✓ a. This show, which premiered in the September of 2006, is a sci-fi drama about superheroes featuring such actors as Masi Oka, Hayden Panettiere, and Christopher Eccleston.
 - i. Answer: Heroes
 - ✓ b. This character is a cheerleader who discovers she has the power of spontaneous regeneration when she lacerates her hand accidentally.
 - i. Answer: Claire
 - X c. This character, the main antagonist of the series, is a serial killer who, by unknown means, acquires the superpowers of those he kills.
 - i. Answer: Sylar (Accept “Gabriel Gray”)

3. For ten points each, answer the following about the novel *Crime and Punishment*.
 - a. Along with *The Idiot* and *The Brothers Karamazov*, this author wrote *Crime and Punishment*.
 - i. Answer: Fyodor Dostoyevsky
 - b. This main character of *Crime and Punishment* attempts to remedy his financial troubles by murdering an avaricious pawnbroker, but is left riddled with guilt.
 - i. Answer: Raskolnikov
 - c. Among the many themes the book explores, it deals with this philosophy, associated with Sartre and Camus.
 - i. Answer: Existentialism

4. For 5 points for one, 10 for two, 20 for three, or 30 for all four – a member of which family of curves is given by the equation...

A. $r^2 = a \cos 2\theta$, in polar coordinates?

answer: lemniscate

✓ B. $y = x^2$?

answer: parabola

✓ C. $x^2 + y^2 = 16$?

answer: circle (Prompt on "ellipse")

✗ D. $4y^2 = 60 + 3x^2$?

answer: hyperbola

5. For ten points each, answer the following about Antonin Dvorak.

✓ a. He was born near this capital of the Czech Republic.

i. Answer: Prague

✗ b. He composed this famous symphony, which was influenced by Native American music, while in the United States.

i. Answer: New World Symphony (Accept "Symphony #9")

✓ c. Dvorak was influenced by the folk music of this region in central Europe, from which the term for people whose lives revolve around self-expression through art is derived.

i. Answer: Bohemia

6. For ten points each, answer the following about the theory of natural selection.

a. This English naturalist formulated the theory of natural selection.

i. Answer: Charles Darwin

b. Darwin was influenced by this English political economist and demographer, the author of *An Essay on the Principle of Human Population*.

i. Answer: Thomas Malthus

c. Darwin was influenced by this Scottish geologist, who proposed the theory of uniformitarianism in his book *The Principles of Geology*.

i. Answer: Charles Lyell

7. For 10 points each, answer these questions about radioactivity.

A. This is the least penetrating particle emitted by a radioactive atom. Clothes or even a piece of paper can stop these.

ANSWER: alpha particle

B. An alpha particle is identical to what atom's nucleus?

ANSWER: helium-4

C. One nucleus decays per second in what SI-derived unit of radioactivity?

ANSWER: Becquerel

replace

X

8. For ten points each, answer the following about clouds.
- This is generally caused by ice crystals in cirrus clouds in the upper troposphere; this is also the ring of light that appears around some religious icons.
 - Answer: halo
 - The clouds of Venus are comprised entirely of droplets made of this kind of acid.
 - Answer: sulfuric acid
 - This branch of meteorology is the study of clouds, taking its name from the Greek word for cloud.
 - Answer: nephology
9. For ten points each, answer the following the French Revolution.
- This member of the Committee of Public Safety was known as "The Incorruptible" and was one of the chief proponents of the Reign of Terror.
 - Answer: Maximilien Robespierre
 - The death of Robespierre led to the shutdown of what club whose name is associated with any left-wing extremist today?
 - Answer: Jacobin(s)
 - What five-member body came to replace the committee of Public Safety and was itself overthrown by Napoleon?
 - Answer: the (French) Directory
10. For ten points each, answer the following about Romantic era artists given some of their most notable works.
- The Hay Wain* and *Dedham Vale*
 - Answer: John Constable
 - Naked Maja* and *Clothed Maja*
 - Answer: Francisco José de Goya y Lucientes
 - The Lady of Shalott* and *Ophelia*
 - Answer: John William Waterhouse

✓ lightning round #7

This musical piece is based off of a number of poems by Barbarian Benedictine monks.
Name this cantata by Carl Orff.
answer: Carmina Borana